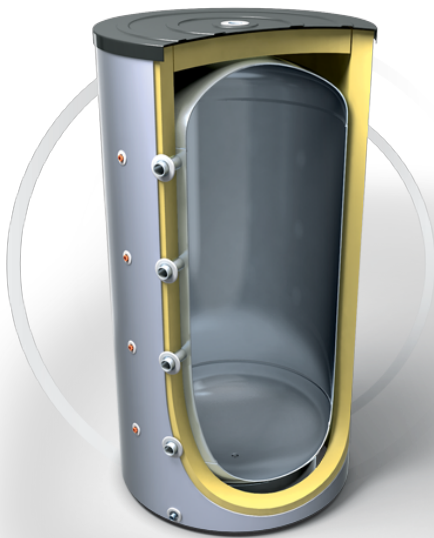


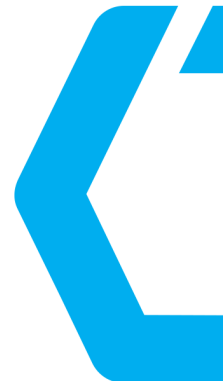
V 1500 120 F45 TP4

Rezervor de acumulare pentru agent termic

Informatii principale



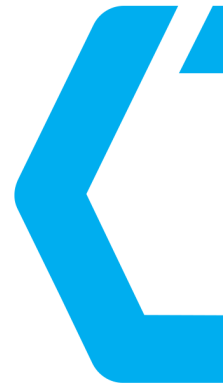
- Rezervor de otel - ne-emailat
- Izolatie de inalta eficienta din poliuretan flexibil - 100 mm
- 4 teci pentru senzori termici
- 4+5 racorduri pentru sisteme termice
- Racord de intrare
- Racord de Aerisire/lesire
- Racord de golire
- Manta exterioara de plastic



V 1500 120 F45 TP4

Rezervor de acumulare pentru agent termic

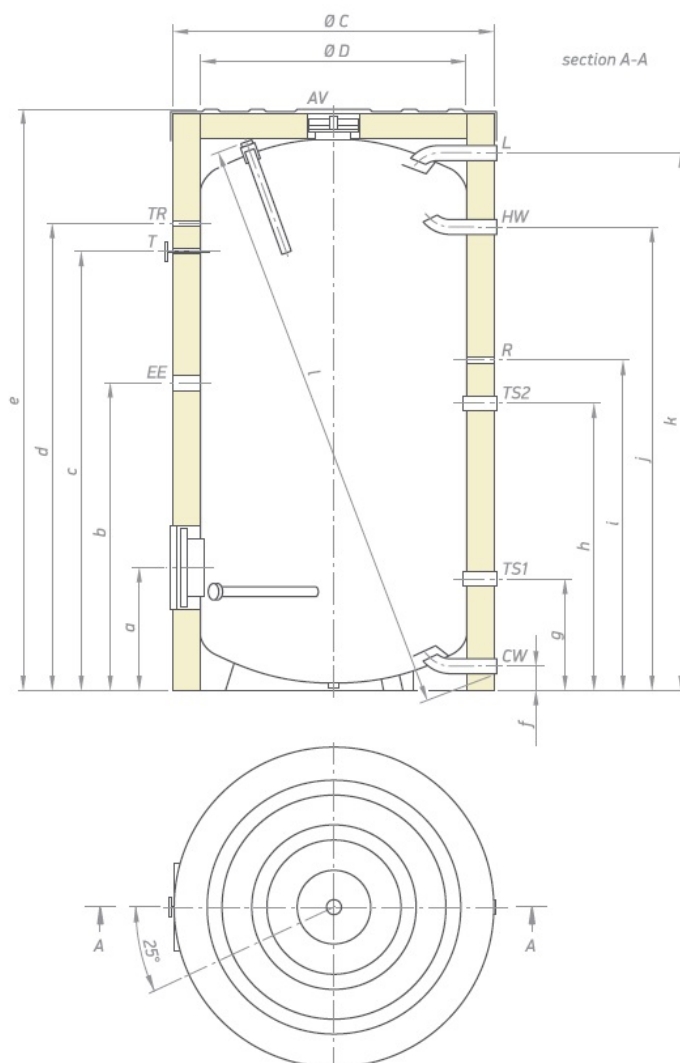
Caracteristici tehnice	
Capacitate nominala [L]	1500 L
Tipul de protectie al vasului	Vas din otel - nu este emailat
Presiunea de lucru a vasului	0.3 MPa
Temperatura maxima de lucru	95 T°C
Supapa de siguranta	Nu
Teaca pentru senzorul de temperatura	4 buc
4+5 Intrari / Iesiri	Da
Racord de golire	Da
Dimensiuni [mm] [D/h]	1200 x 2220 mm
Greutate neta [kg]	285



V 1500 120 F45 TP4

Rezervor de acumulare pentru agent termic

Разрезы и размеры



Dimensions [±5 mm]	EV 1500 120 F45 TP2	EV 2000 130 F46 TP2
a [mm]	467	497
b [mm]	1167	1287
c [mm]	1665	1827
d [mm]	1767	1927
e [mm]	2193	2399
f [mm]	90	90
g [mm]	367	397
h [mm]	1080	1141
i [mm]	1250	1370
j [mm]	1750	1915
k [mm]	2061	2263
l [mm]	2214	2412
Ø C [mm]	1200	1300
Ø D [mm]	1000	1100

- L - battery charging - G 2" B
- CW - cold water inlet - G 2" B
- HW - hot water outlet - G 2" B
- R - recirculation - G 1½"
- TS - 1; 2 - thermosensor - G ½"
- EE - opening for electrical element - G 1½"
- T - external thermometer - Ø 14 x 1.5
- TR - opening for thermoregulator - G ½"
- AV - opening for air ventilation - G ¾"

Thread designations according to EN ISO 228-1/